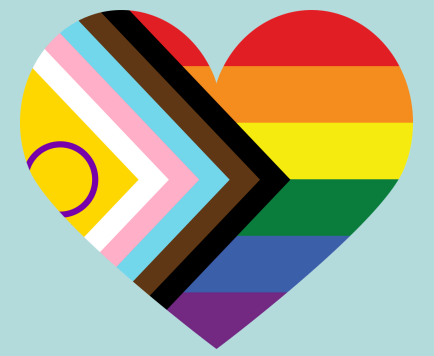




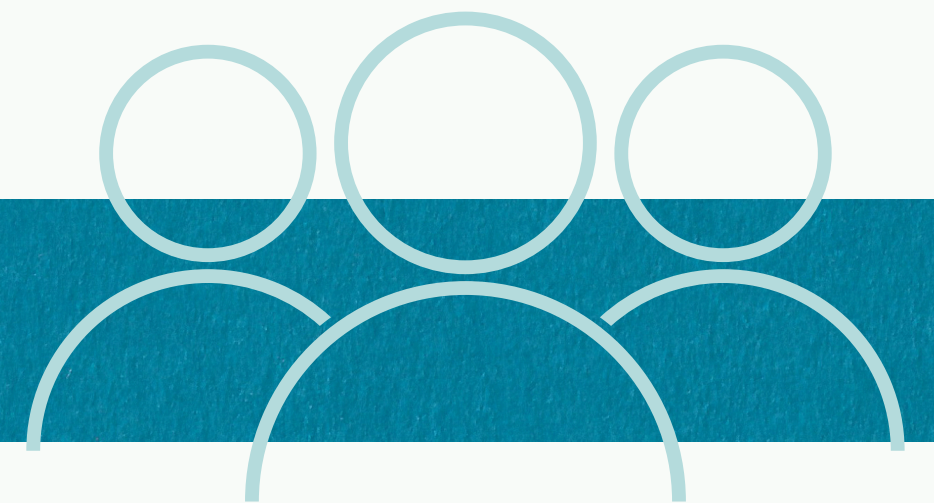
JOIN US



SEEKING A GENERAL REGISTRANT 1-YEAR CONTRACT WITH POSSIBLE EXTENSION START AS EARLY AS SEPTEMBER 1, 2026

Family Midwifery Care is a supportive, collaborative, and well-established midwifery practice that values collegial teamwork, flexibility, and sustainability in practice. Our shared-care model allows midwives to build meaningful relationships with clients while maintaining generous off-call time and a healthy work-life balance.

ABOUT OUR CLINIC



- Practice of 15 midwives working in shared-care teams of two or three
- Supportive, fair, and flexible workplace culture
- Opportunities for both full- and part-time midwives to achieve work-life balance
- Commitment to equity, diversity, and inclusion; midwives who identify as BIPOC are strongly encouraged to apply
- Service to a diverse client population in Guelph, Fergus, and surrounding areas, including Mennonite and other rural communities
- We hold privileges at Guelph General Hospital (Level II). Three of our teams also work out of Groves Memorial Community Hospital in Fergus. We have strong interprofessional relationships at both hospitals.
- Guelph is a vibrant university community offering abundant outdoor activities, agriculture, arts, and academic opportunities.

**WE WOULD LOVE TO HEAR FROM YOU!
PLEASE APPLY WITH COVER LETTER & RESUME TO:**



admin@familymidwiferycare.ca AND wendy.pearle@familymidwiferycare.ca