



Midwives of Middlesex & Area

1615 North Routledge Park, Unit 37 London, Ontario, N6H 5N5

226-721-0777 (office) 519-473-4261 (fax)

[www.momamidwives.ca](http://www.momamidwives.ca)



# WE ARE HIRING

## LOCUM – General Registrant

### What we are looking for:

- A Registered Midwife eligible to practice in Ontario.
- **Ideally available to start on call in December 2026 until January 2028 to cover a parental leave with a potential to be extended. Start time can be negotiated.**
- Commitment to providing culturally competent and inclusive care
- Strong communication and clinical skills, experience with managing oxytocin and epidurals preferred but willing to train.
- Willingness to work in a team-oriented model of care and to build/support a positive culture.

### What we offer:

- A shared care model with 27 weeks off with a caseload of 33 BCC.
- Dedicated mentorship and orientation period
- Established team of experienced midwives who prioritize collaboration and learning
- Opportunities for involvement in community outreach, education, and advocacy
- Supportive administrative and clinical environment
- A diverse client base with access to both home, clinic and hospital births (Privileges at Victoria Hospital- London Health Sciences Centre- Level 3) Our clinic has its own birthing suite available to our clients.

**Apply now!**

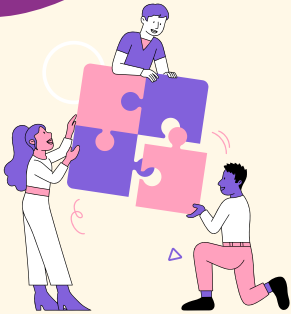
Please send your cover letter and resume to [admin@momamidwives.ca](mailto:admin@momamidwives.ca)

We welcome applications from midwives of all backgrounds and are committed to fostering a diverse and inclusive practice.

# ABOUT US



We are a supportive, inclusive, and community-focused midwifery practice based in North West London, Ontario with a catchment area that services communities of Middlesex county. Our 8 member shared care team is passionate about providing high-quality, client-centered care to a diverse population. We value equity, work-life balance, relationship building, consensus based decision making, collaborative teamwork, and professional growth.



## ABOUT THE HOSPITAL

LHSC Victoria hospital is a tertiary care facility with an integrated Midwifery Department. The Obstetrical Care Unit offers a supportive nursing and obstetrical environment to which midwives work to the fullest scope of practice. Midwives are offered breaks, opportunities to learn through rounds and insitu simulations and are valued members of the team with just under 20% of births cared for by midwives.



## THE OPPORTUNITY

We're excited to welcome a New Midwife to our growing team! This is an ideal opportunity for someone seeking mentorship, experience in a busy rural/urban practice, and the chance to build meaningful connections with clients and colleagues.

## JOIN OUR TEAM

